

# Interior

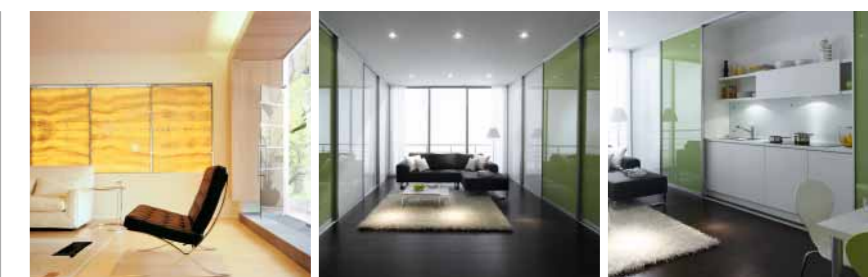
Creative design  
for living spaces.

## Intro



Page 4-5

## Living

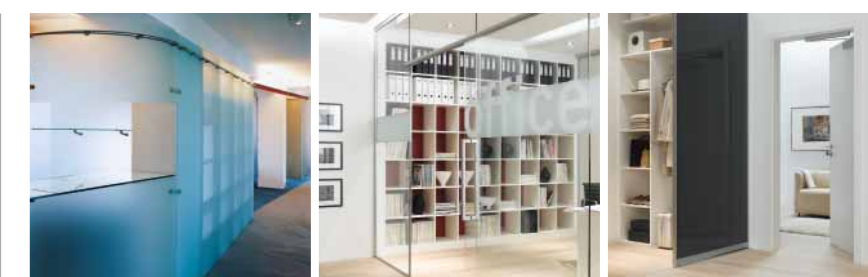


Page 6-7

### Spatial Efficiency

Living Room | Kitchen | Bedroom | Bathroom  
Page 8-13

## Working

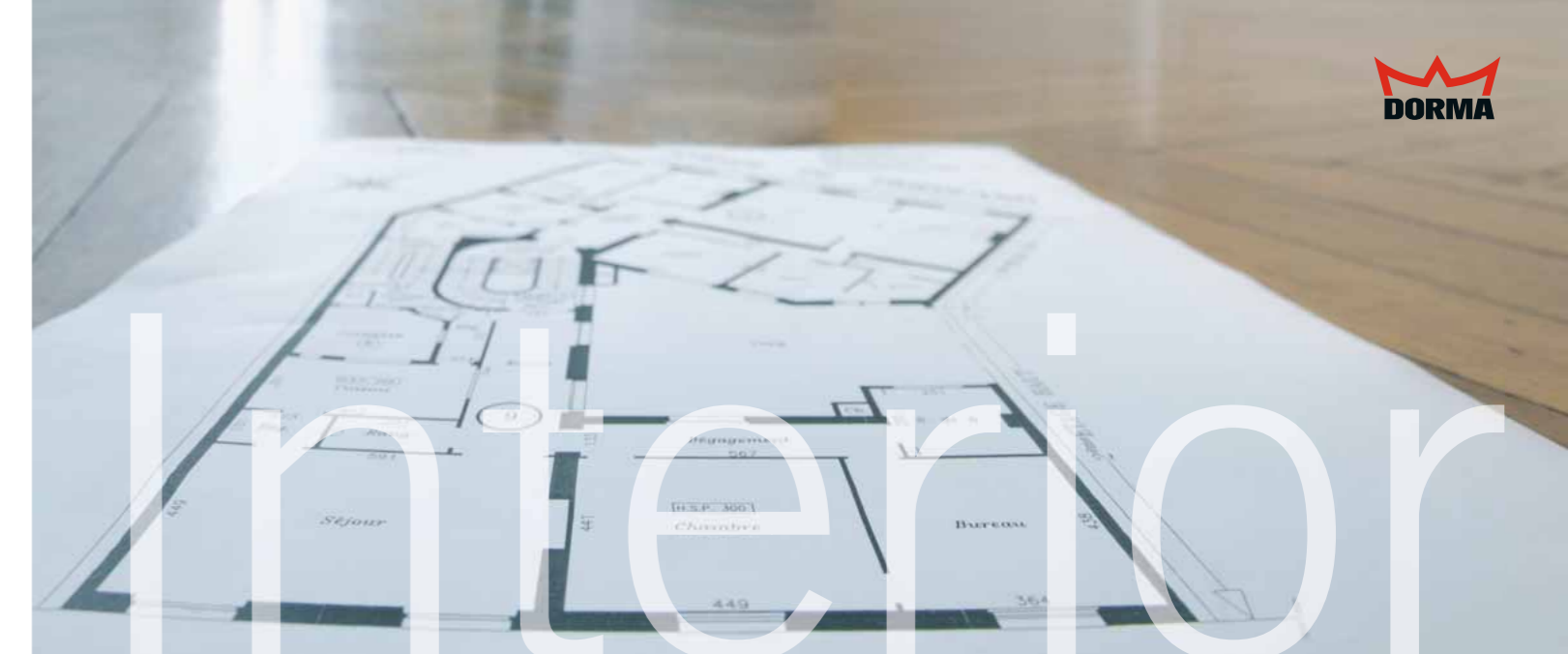


Page 26-27

### Home Office

Entrance | Home Office  
Page 28-31

Concepts for varying demands.

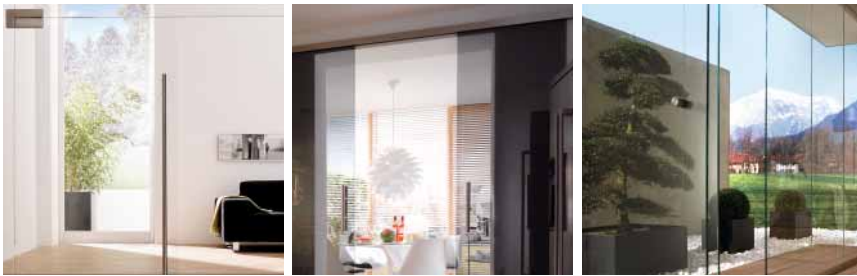


## Concepts for varying demands.

### Index

<b>A</b>	<b>E</b>	<b>O</b>	
AGILE 150 16	Entrance, Lobby 14, 15	Office 26, 28–31, 34, 37	Spatial Efficiency 8–13
Archive 29, 31, 39			Studio 37
ARCOS Universal 7, 14, 15	<b>F</b>	<b>P</b>	Surgery 38, 39
Awards 42	Flexible Room Design 36, 37	Partitions 36, 37	System 55 34
<b>B</b>	Folding glass wall 37	Patio 18, 19	<b>T</b>
Balcony sliding wall 18, 19		PORTEO 10, 11, 23	Telescopic support bar 25
Balcony 18, 19	<b>H</b>	Practice 38, 39	TENSOR 17
Bathroom 9, 11, 13, 21, 24, 25	Home Office 28–31	Premium lever handle 7, 15, 22, 28	Terrace 18, 19
Bedroom 8, 10, 20, 21	<b>K</b>	Pull handle TG 9387 40	Toughened glass shower 13, 24, 25
Bespoke pushbutton 34	Kitchen 9, 11, 12, 16, 17, 23	<b>S</b>	Toughened glass system 7, 15, 41
BEYOND 29	<b>L</b>	Sensita 7	Transparency 14–17, 38–41
BF 132 24	Lever handle 7, 15, 22, 28	Shower fittings 13, 24, 25	TS 97 door closer 30
BO 460 13	Living Comfort 20–25	Showroom 32–35	<b>U</b>
BSW-G 19	Living 6–25	Sliding door operator 21, 22, 32–35	Universal patch fittings 41
BSW-R 19	Living 8–11, 14, 15, 22	Sliding door 8–13, 16, 21, 22, 25, 26, 28–35, 39	<b>W</b>
<b>C</b>	<b>M</b>	Sliding glass doors 8–13, 16, 21, 22, 25, 26, 28–31, 39	Walk-in shower 24
Conference 36, 37, 40, 41	MAGNEO 21, 22, 32–35	Smooth Transitions 18, 19	Wardrobe 9, 13, 31
Contur design 42	MANET AMBIENT 12		Working 26–41
CS 80 MAGNEO 21, 22, 32–35	MANET sliding door system 20–22, 26, 27, 38–39		<b>X</b>
<b>D</b>	Motion detector 35		XS cylinder PZ 03 28
Design "Square" 25	Movable walls 36, 37		
Display Areas 32–35	MOVEO, MOVEO Glass 36, 37		
Door assistant 10, 11, 23	MSTS 5000 Vario 8–13, 28–31		
Door stop TZ 5021 16			
Double-action glass door system 17			

## Transparency | Smooth Transitions



Entrance | Living Room | Kitchen | Terrace | Balcony  
Page 14–19

## Living Comfort



Bedroom | Living Room | Kitchen | Bathroom  
Page 20–25

## Display Areas



Showroom  
Page 32–35

## Flexible Room Design



Studio | Office | Conference Room  
Page 36–37

## Transparency



Surgery | Practice  
Page 38–41

[in'tiəriə]

in•te•ri•or (English) from the Latin interior  
= inside; creating, equipping and designing  
the inside of a building

**Just imagine if we could design space with no restrictions.**



**Space for ideas.**

Creative design for living spaces means taking note of individual wishes and requirements – because society is changing and with it so are the demands on spatial concepts. Open plan kitchens, home offices, converting former children's bedrooms into walk-in wardrobes, changing offices into conference rooms or creating smooth transitions between the living room and garden – these are the contemporary ideas and trends that abound. And it is DORMA's particular ambition to harness these developments and create

products based on an imaginative, contemporary response. In private rooms, in small offices, in doctors' surgeries or in professional practices, finding the right balance between function and aesthetic elegance is of major importance. So here, all DORMA products make a major contribution, one that can permanently influence the basic room concept.

**f** You will find an index of key words on page 43.



Living



Working

# Living



Example: DORMA Premium 8928 lever handle



Transparency and openness as style elements in room design. With ARCOS Universal fittings and glass panelling from the Sensita series.

## People change. So how can their “habitats” be made to adapt with their lifestyle?

### Individual solutions for new spatial demands.

How we live says a lot about us. The atmosphere engendered by our home provides the backdrop to our lives. Whether it's an old building

or a loft apartment, a farmhouse or bungalow, homes are as individual as the people who live in them. Changing circumstances and preferences influence our lifestyle. While in the past the priority was on cosy

convenience, today transparency and room flexibility characterise the “zeitgeist”. Social developments also play an important role. For example, individual and practicable solutions for single households will be in

particularly high demand in the future. However interior design may develop, DORMA will continue to supply well conceived products and integrated solutions that enable lifestyle demands to be satisfied the modern way.



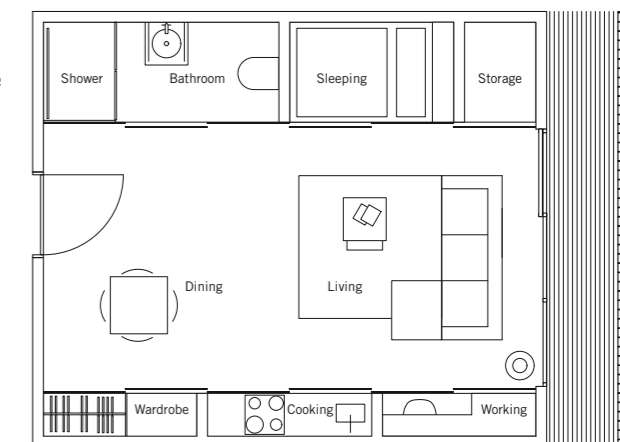
## How to incorporate four rooms within one?

### Enhancing room flexibility.

A large living room and a comfortable kitchen, a spacious bathroom and cosy bedroom – all accommodated within no more than some 40 square metres. Now that's spatial efficiency, and it's a solution that cleverly meets the lifestyle requirements of the future. The trend to single households in particular underlines how important multi-functional rooms are going to be. Ideas from DORMA help to make

them a reality. For example, with variable sliding doors. These can be used to change the room experience and, through the fascinating visuals of their surface, they can also contribute an attractive style element to the interior design.

For rooms that need to be efficient and comfortable at the same time: MST5 5000 Vario sliding doors.





From combined living room and kitchen to integrated living room and bathroom, and from living room and bathroom to living/bedroom – all made possible by sliding doors from DORMA.



Example: DORMA PORTEO door assistant

## How to get the spatial generosity of a large apartment in a small apartment.

**Enjoying the space of the moment.**

Compact apartment units are a hot commodity. Whether as a single-occupancy home, a company apartment or a holiday flat, they are in demand. Consequently, interior architecture is now focusing on integrating more rooms within

fewer square metres. And sliding doors from DORMA are the key to such solutions. These enable different areas to be combined with one another – or separated from one another – according to the prevailing need. By sliding one door, the occupants have – at lunchtime – a living room bordered by an open

plan kitchenette. Once lunch is over, this disappears again behind the sliding door. And in the evening? Another door is opened and the spatial atmosphere is converted in to that of a bathroom or a cosy bedroom. A multi-faceted spatial experience such as is normally only associated with large apartments.

Ideas in glass integrated within the kitchenette: Glass panelling with MANET AMBIENT single-point fixings.



Stylish connections with glass as the interface – held in place by MANET AMBIENT single-point fixings.



The all glass shower enclosure from DORMA can be harmoniously integrated within the overall concept conveyed by the bathroom furniture.



Chrome-plated brass fittings of the BO 460 series from DORMA complete the elegant look of total transparency.

## Sophisticated ideas for efficient space utilisation.

### Big on the small details.

Enabling the room to adapt to the requirements of its occupants: Behind DORMA sliding doors and walls are concealed the various living areas and functions needed within a home – including a workspace and wardrobe. A

fully functioning and conveniently appointed bathroom is also part of the package. And if required, this can be converted from a separate sanitary area into a combined living/bathroom, with a generously dimensioned shower enclosure as part of the deal. An open space in

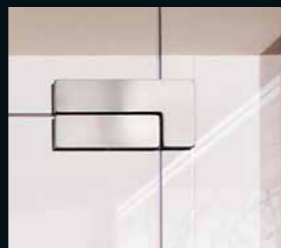
which one feels very much at home rather than closed in. Thus, creative design ideas are combined with impressive technology from DORMA to create individual, flexible room solutions.





## How to create a conducive ambience with transparency?

All glass solutions featuring fittings from the ARCOS Universal series.



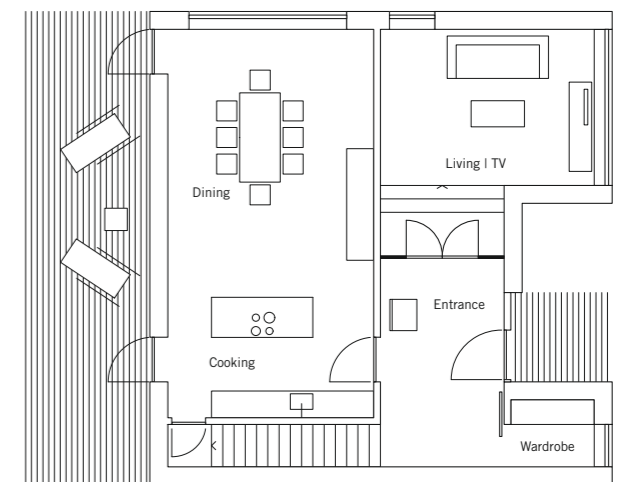
The inviting effect of a light-flooded room – made possible with ARCOS Universal toughened glass hardware.

Optical elegance: Premium 8906 lever handle.

### Effective use of glass elements with high-grade hardware.

Glass is a material which, through its transparency, provides rooms with light and breadth. These in turn impart to living areas precisely the vitality that makes them so attractive. An entrance area, for example, when enhanced with glass doors or glass walls with ARCOS Universal fittings, has a significantly more generous appearance and is therefore much more

inviting than an opaque alternative. Daylight is let in while cold air is kept out. A living room also becomes more “expansive” when provided with a toughened glass feature. And here, the glass hardware used can further enhance the aesthetics of the concept. For transparent solutions, DORMA offers a creative variety of products characterised by sophisticated design, reliable functionality and easy handling.



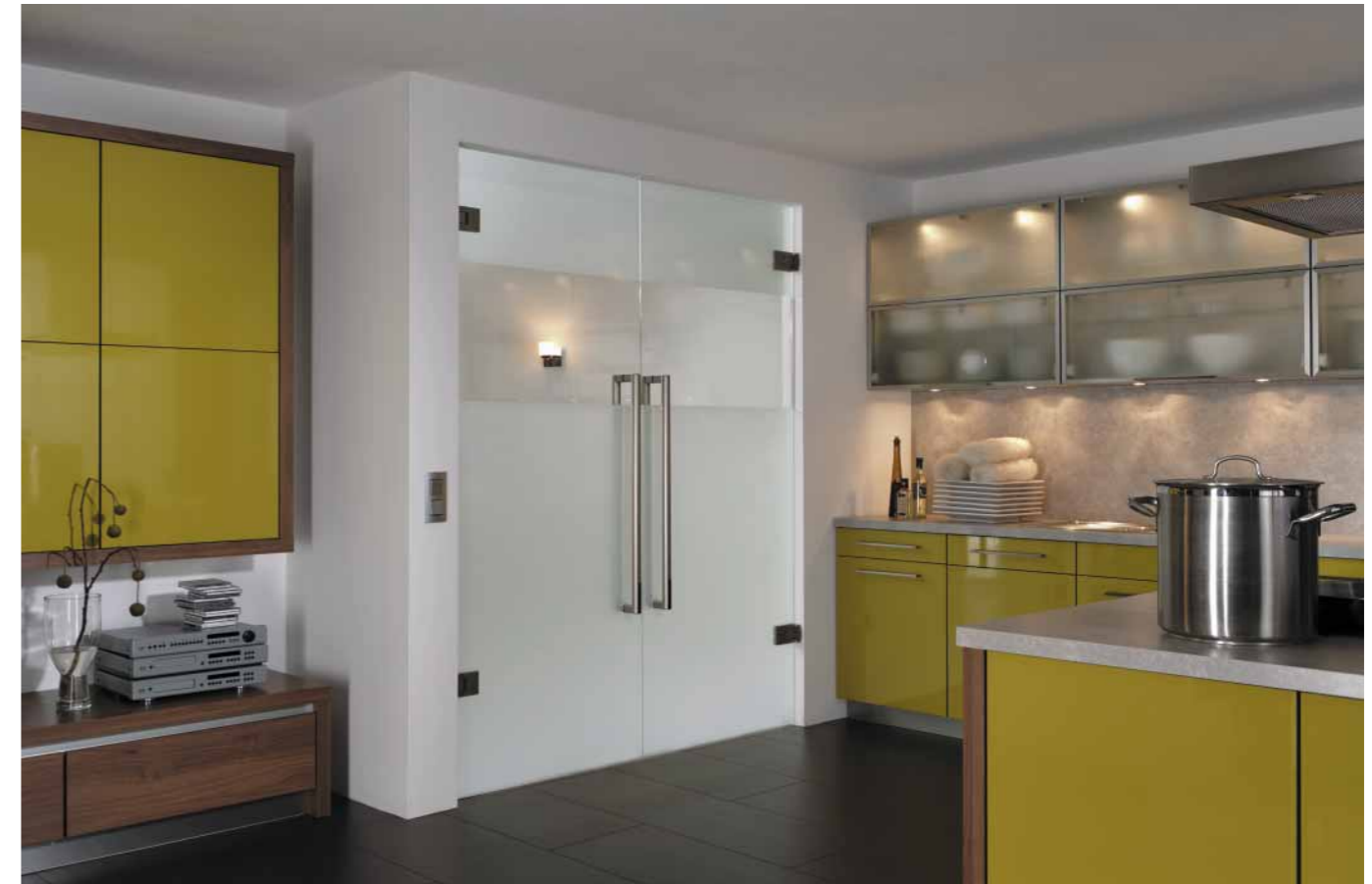


With the AGILE 150 sliding door system, a transparent interface can be created between the eating area and the kitchen.



Reliably returning a double-action door to neutral: TENSOR hinges.

The TENSOR double-action glass door system, with integral hold-open function at 90°.



Example: DORMA door stop TZ 5021

## Rendering rooms both open and cosy.

### Transparency as a feel good factor.

Kitchens have developed from pure cooking facilities into communication hubs within the wider living area. Consequently, as much value is placed here on comfort, convenience and atmosphere

as on equipment functionality. The idea: To design a kitchen that works both as an open plan living space and as a functional area in keeping with the overall lifestyle feel. Intelligent glass hardware systems provide the ideal transparent interfaces required. Consequently, a

kitchen and eating area can be combined within an integrated space in which people are made to feel comfortable by lightness, brightness and a feeling of expanse. In short, a room that is both open and, at the same time, cosy. Ideas from DORMA make it possible.



Whether open or closed, with a BSW balcony sliding wall, the garden and living area are integrated within a single, fluid space.

## How to incorporate a garden within the home?

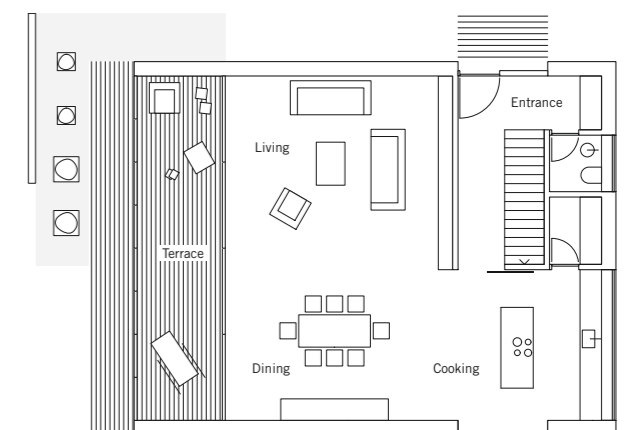


The BSW balcony sliding wall – at one with nature.

### Communing with nature.

People are clamouring more and more for a lifestyle in harmony with nature. Now, with BSW balcony sliding walls manufactured from toughened glass, homes can interface more effectively with the great outdoors. Throughout the year, the vagaries and delights of the seasons can be transported into or sampled from the inside. Through their transparency, BSW systems create just the right visual effects, providing a smooth

transition between living space and nature. Whether in the BSW-G version with its exposed lateral glass edges, or as the BSW-R with its trim, slim aluminium frame profiles around the individual panels, balcony sliding walls of glass enhance in-home quality while also making an attractive architectural and design statement. With such solutions, the balcony, patio or terrace acts as a buffer zone between inside and out, allowing it to be utilised even when the weather is less than fair.





## How to harness automation for more home comforts?

Opening up the room for enhanced living comfort and light – with aesthetically elegant MANET single-point fixings.

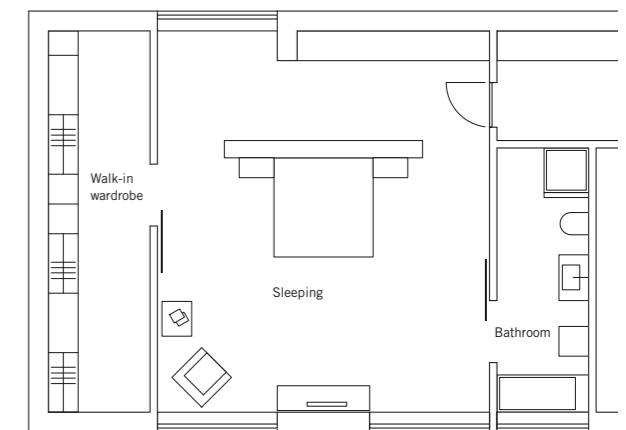


### Simply more convenience.

Domestic bliss and functional ideas need not be mutually exclusive. Quite the opposite, in fact. If rooms are fitted out with smart products, they will not only contribute to living comfort but also significantly improve it – and thus the quality of life in general. For example, an automatic sliding door operator from DORMA will open the partition between the bedroom and bathroom reliably, quietly and with the utmost

convenience. This provides added value in living comfort with further enhancements accruing from the sophisticated design of the details – for example in the form of modern MANET single-point fixings for the sliding glass door. Living is all about feeling good in your surroundings, and with the convincing technology and reliable functionality of DORMA's products.

Operating doors with automatic elegance – the CS 80 MAGNEO sliding door operator.



Elegant and easy to operate – a sliding glass door fitted with the CS 80 MAGNEO automatic sliding door operator.



With the PORTEO door assistant, doors can be opened and closed with effortless ease.



Practical convenience, attractive styling – the PORTEO in the DORMA Contur design.



Example: DORMA Premium 8990 lever handle

## The practical side to feel good convenience.

### Opening and closing as if by magic.

Living comfort is characterised by that good feeling you get from a home that "works". And it's a feeling that can be greatly enhanced by modern technology, especially the kind that operates all by itself! Consider, for example, the

PORTEO door assistant from DORMA, a system that takes all the effort out of opening and closing interior doors. Completely automatic for practical purposes, quiet and reliable, it can also be equipped with a hand held transmitter or pushbutton actuator operating in conjunction with an electric

strike – part of the package – for releasing the door. And sliding doors between the living room and kitchen can be equally easily controlled. With a magnetic sliding door operator, an elegant all glass solution is automatically operated.



A bathroom that makes you feel like you're on holiday. With a frameless walk-in shower from DORMA.

Wellness in its clearest form – with ceiling high toughened glass sliding panels.



Example: DORMA BF 132 shower fitting

## How to turn a bathroom into a relaxing retreat.

### Just right for relaxing.

Bathrooms today are having to meet a quite special set of requirements. They need to be a relaxing zone in which, in addition to personal care, users can also find their inner balance. Glass partitions and doors can make an important contribution here because they help to maximise spatial

efficiency. They provide splash protection for the bathtub and shower without visually cluttering up the room. Particularly elegant solutions are available in the form of frameless glass panels with distinctively shaped fittings – ideas from DORMA capable of converting the bathroom to an oasis of well-being.



Bathroom aesthetics down to the finest detail: The telescopic support bar design "Square".



Example: DORMA MANET roller carrier for sliding doors.



The MANET system enhances the elegant affect generated by glazed areas.

## How to create inspirational spaces for efficiency at work?

### New perspectives for modern working environments.

Promoting the successful interplay of efficiency and creativity provides a contemporary basis for successful workplace surroundings. Aside from personal performance, the atmosphere of the room

can play a major role in getting results. The key is to define the required individual style – for both the interior design and the fixtures and fittings – with plenty of light and serene silence included. With DORMA the appropriate solutions can be found – for sensibly and efficiently

combining working and living ambiances, for rendering a room representative or for creating a variable office configuration. Whether doctors, lawyers or architects, with ideas from DORMA, their working worlds become a shop window of which they can be proud.



## How to sensibly combine living and working under one roof?

When the door to the private quarters needs high quality security, the PREMIUM door lever handle with XS cylinder type XS PZ 03 offers fully controlled access.

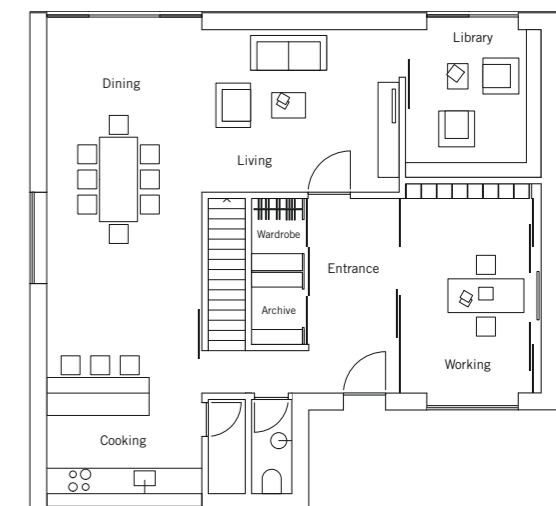


### Ideal for single family homes and large apartments.

There is a clear trend towards more and more people running a business from home. Not only working mothers but also lawyers, graphic artists and other people in consultancy or freelance professions want to sensibly combine living and working within the same space. The logical step: A home office that can also serve as an integral part of the living environment. Such wishes come true with tough-

ened glass partitioning systems and sliding glass doors that spatially separate the private from the professional while providing a visual link. Concentration is assured and discussions can be conducted without compromising privacy. Intelligent solutions realisable with DORMA products.

An attractive all glass solution in the form of the BEYOND sliding glass door system with individually designed panels from DORMA.

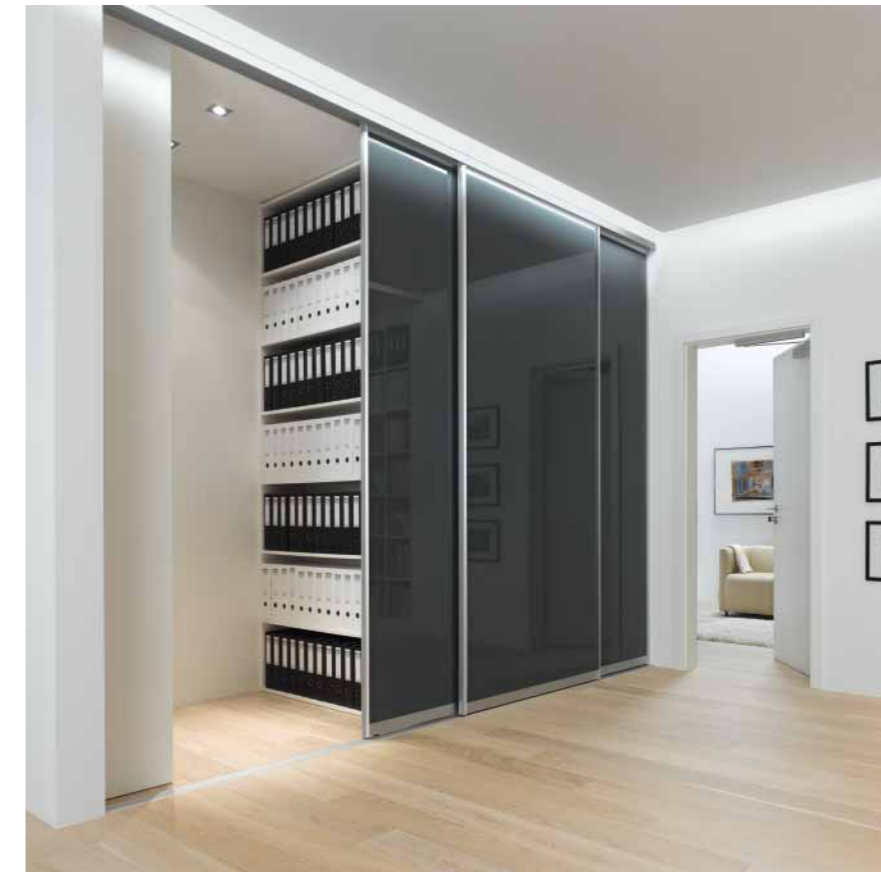






A multi-functional wall – a panel slides effortlessly to one side to reveal a screen – featuring sliding glass doors of the type MST5 5000 VARIO.

One partition system, many uses. These sliding glass doors can conceal not only archiving but also a wardrobe.



Example: DORMA TS 97 door closer

## Different everyday functions intelligently combined.

### Facilitating professional style.

With a home office in particular, it will be even more important in the future that professional working processes are effectively facilitated. Advanced technical equipment will need to be provided as will the possibility of installing an archive. With ideas from DORMA,

this too can be realised. For example with MST5 5000 Vario sliding glass doors. They are easy to operate and can be used for a multiplicity of functions – e.g. as an elegant cover for a TV screen. Simply move the door to one side and the screen or projection surface is revealed ready for operation.



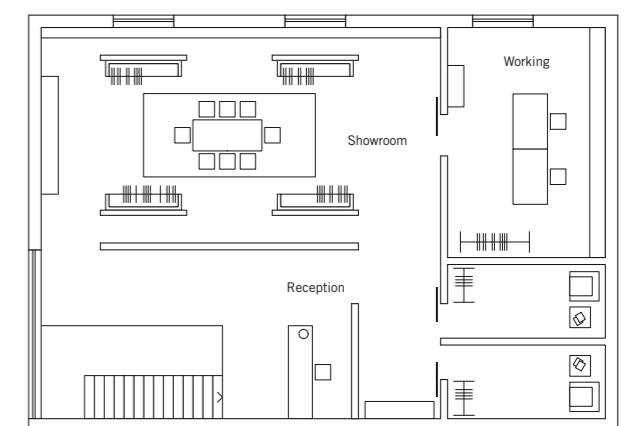
## Can representative solutions also be functional?

### Enhancing the shopping experience.

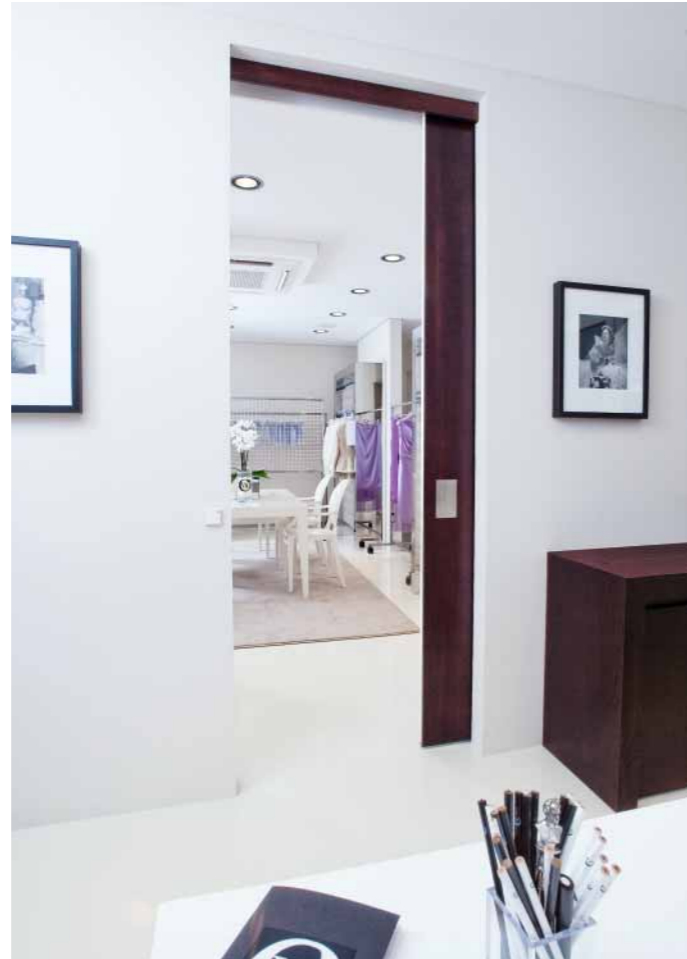
The attractiveness of fashionable brands and their showrooms is being increasingly defined by the styling of their presentation. And this is all the more successful, the more the prospective customers can be enticed and enthralled. Good ideas underpinned by an impressive combination of function and form are therefore paramount. The convenient, elegant CS 80 MAGNEO operat-

Representative sliding mirror door, actuated by the CS 80 MAGNEO automatic sliding door operator.

ing a sliding mirror door exemplifies the kind of individual room designs required. This automatic operator is able to move doors with consummate ease and in almost complete silence. Rooms are rendered multi-functional yet remain representative.



Between the office and showroom, the CS80 MAGNEO operates the door with magnetic elegance.



Example: DORMA System 55 bespoke pushbutton

## Connecting rooms the imaginative way.

### One space, many possibilities.

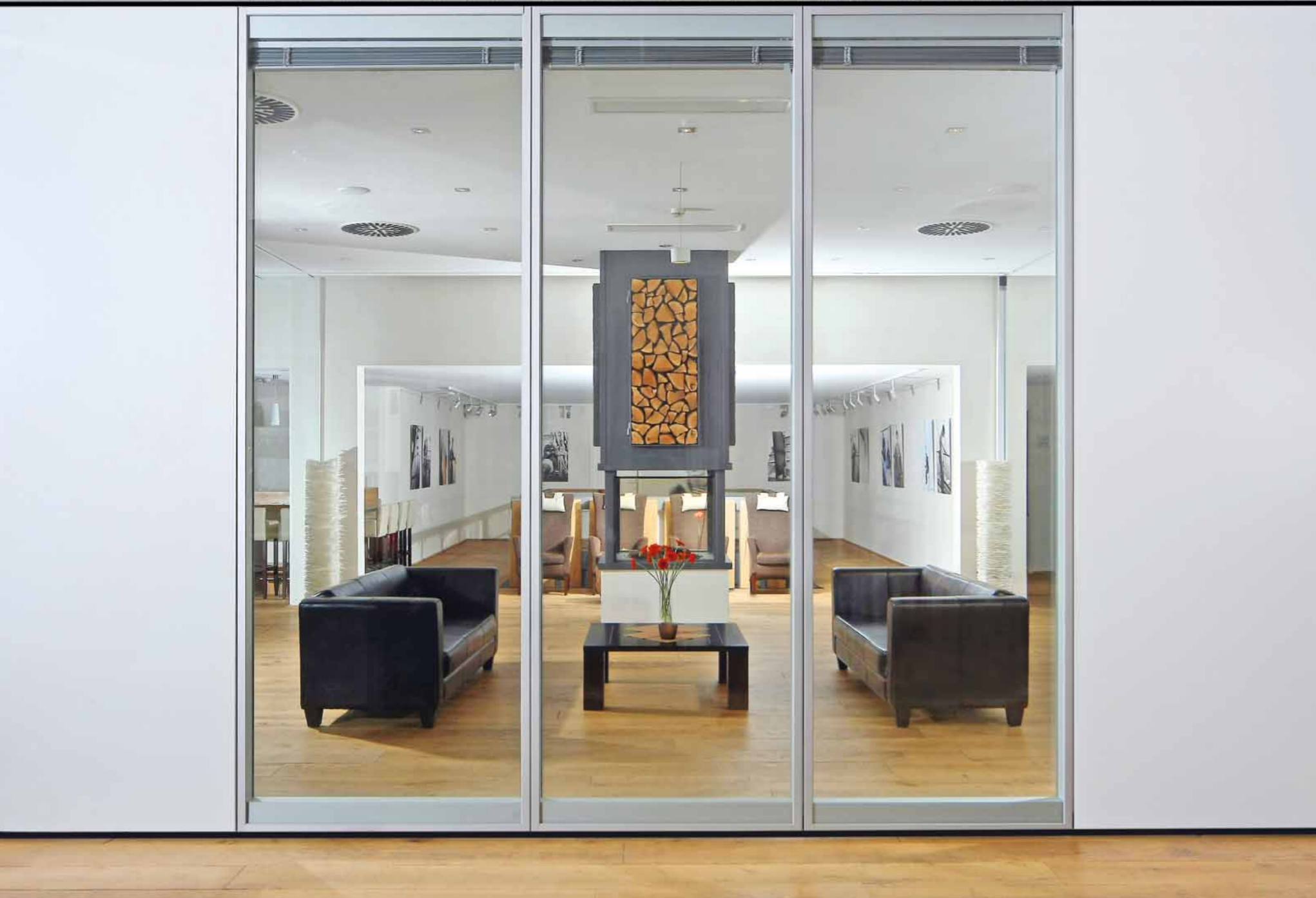
The trend nowadays is to render representative and presentation rooms more versatile – more suitable for different uses in line with the changing demands of business. Rooms need to be suitable for customer meetings, concentrated office work

and also attractive product presentations, all within the same, often quite small, area. The requirement therefore reads: To use the full space for a variety of purposes while at the same time retaining the integrity of its overall appearance. Such demands can be readily achieved with automatic sliding doors from

DORMA. Depending on the required style, these can be transparent, semi-transparent or colour coated. Almost as if by magic, they can be moved into position and separate or join rooms to suit the current usage profile. A representative solution with reliable functionality that's bound to impress.



For high comfort of access: Motion detectors.



Room layouts can be flexible; changed quickly and efficiently varied with MOVEO and MOVEO Glass partitions.

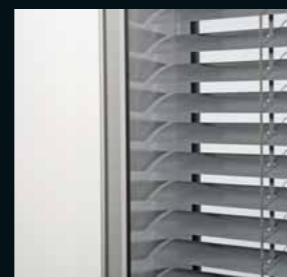


Interior designers: Brett und Partner/Architects: AKH Darmstadt  
Photo: Stefan Schilling, Cologne

Transparent room partitioning. With a glass folding door system from DORMA.

## How to adapt room configurations to demand?

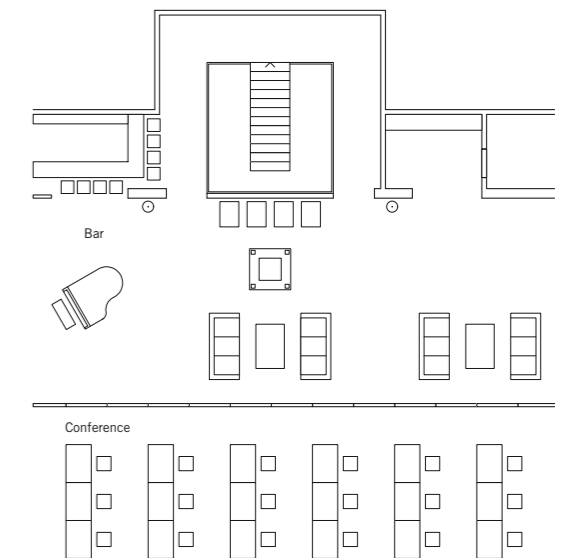
If light or glare protection or indeed just more privacy is required, optional integral blinds in the MOVEO Glass partition system provide the answer.



### Effective spatial versatility.

Studios, offices and even conference rooms are having to be ever more flexible to ensure effective space utilisation. Additionally the demands on modern interior design have followed a similar direction. Today, clients are looking for intelligent functions that facilitate flexible and, at the same time, open, clearly structured room configurations. Discussion and concentration both need to be accommodated within the

same space. With MOVEO and MOVEO Glass, DORMA offers a partitioning system that combines transparent and sound-insulated room concepts within a single solution. With speed, lightness and flexibility part of the package. The result: More light and plenty of quiet. Room sizes can also be effectively adapted by means of a folding glass partition. Easy to operate, it provides a transparent divide to separate, say, an office from a consultation room.

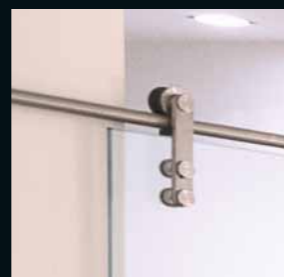


## Flexible Room Design



## How to deploy transparency as a statement of style?

For sophisticated, convenient sliding glass door solutions – the MANET roller carrier.

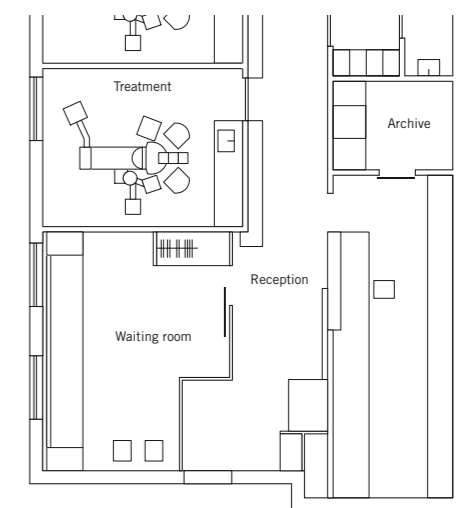


### Clear aesthetics combined with DORMA quality.

For lawyers, notaries or doctors, quality and success have to go hand-in-hand. Hence, the contemporary design of their chambers, practice, surgery or offices is of particular importance. It significantly affects the first impression on the client or patient, creating confidence and conveying quality. Transparency is the key to individualised room design. And DORMA offers a wide range

of sophisticated ideas for sliding glass doors crafted to create the necessary effect. Whether manual or automatic, they impart an impression of discreet elegance while enhancing user convenience, starting at the entrance and extending right through the spatial layout.

An open reception that exudes quality, enhanced by sliding glass doors featuring MANET single-point fixings.



Accessible aesthetics at all levels of the building – with toughened glass systems and glass doors from DORMA.



Example: DORMA pull handle TG 9387

## Open plan designs to create a strong identity.

**Glass panelling for a common expression of style.**

The more individual the demands on office architecture, the more important it is to provide the project with a recognisable, unifying identity. The use of glass panelling is ideal for such purposes. Through their transparency,

expanse and light are combined within a common style at all levels of the building. With toughened glass systems and glass doors from DORMA, such open concepts can be extended beyond the entrance and exit areas, with elegance and functional efficiency ensured in equal measure. Matching pull han-

dles of stainless steel round off the discreet yet aesthetically alluring, high quality appearance.



Minimalist design lines with DORMA Universal patch fittings.



reddot design award



design award



## DORMA product design – awarded for timeless excellence.

### Integrated room styling.

A unified appearance at the detail level contributes enormously to the overall appearance and atmosphere of a room interior. DORMA products in the Contur design exemplify this principle with their unique and unmistakable styling characterised by distinctive yet subtle lines, a cubic shape and hallmark

perforations. With their unique qualities, DORMA products can be readily and harmoniously integrated within almost any room design, contributing to its integrity of appearance and overall aesthetic clarity. DORMA products in the Contur design have garnered many accolades already, and they continue to impress expert panels and design award juries.

